

PREVENTION OF SEXUAL MISCONDUCT ON UNIVERSITY CAMPUSES

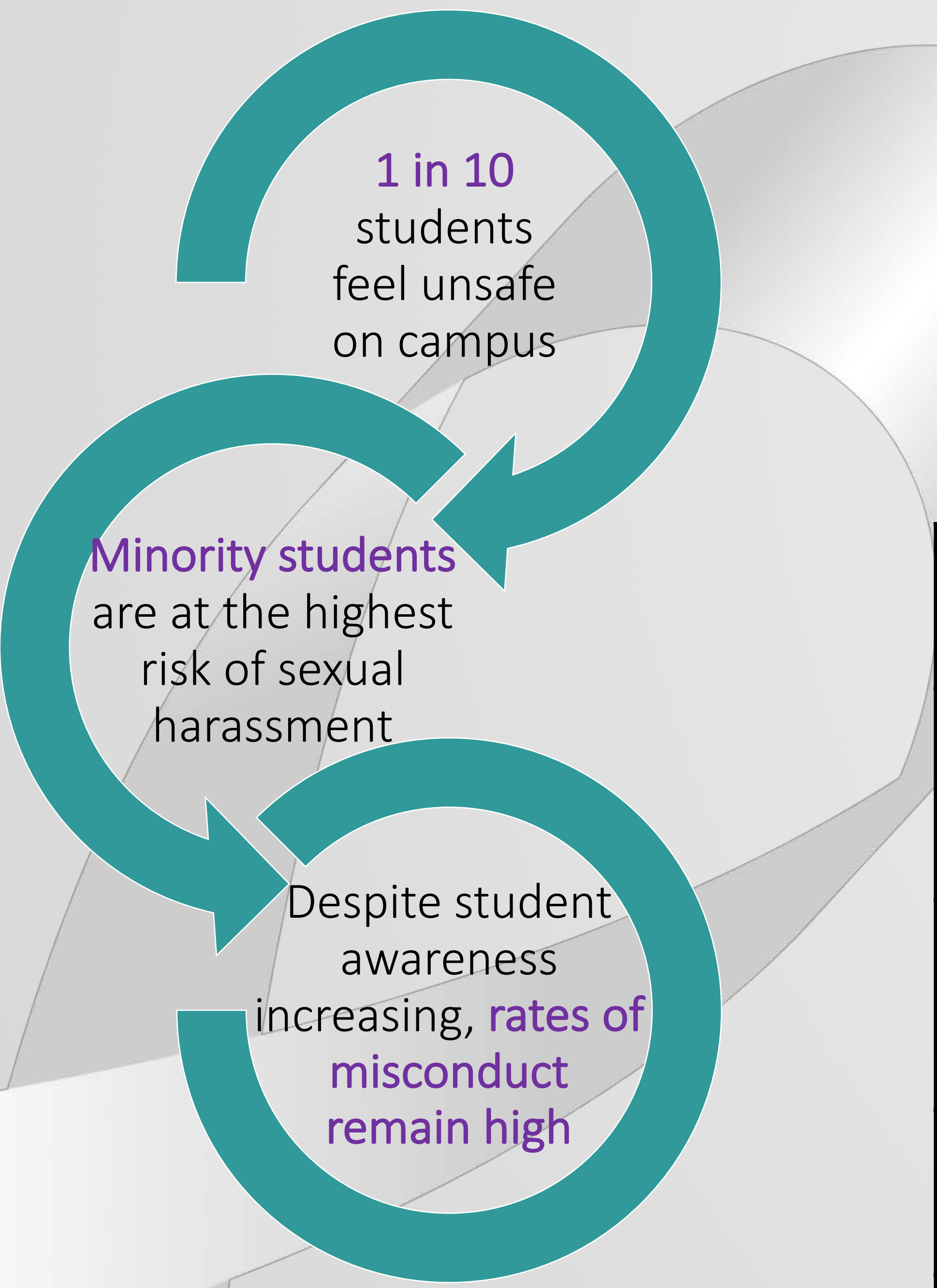


BASS CONNECTIONS

Suzanne Shanahan, Sim Sitkin, Moran Anisman-Razin, Adam Stanaland, Carolyn Bell, Elisabeth Collins, Alexandra Davis, Ryan Geitner, Carly Levi, Sonali Mehta, & Nicolý Santos

WHAT DOES SEXUAL MISCONDUCT LOOK LIKE AT DUKE?

By comparing Duke's sexual misconduct prevention, education, and resources for support to those of other accredited universities, we hope to adopt a framework under which we can better examine sexual misconduct at Duke.



The first part of our study examines student's perceptions of safety on campus (Figure 1), as well as how other universities are tackling the issue of sexual misconduct (Table 1).

DUKE'S WOMEN CENTER
919-684-3897

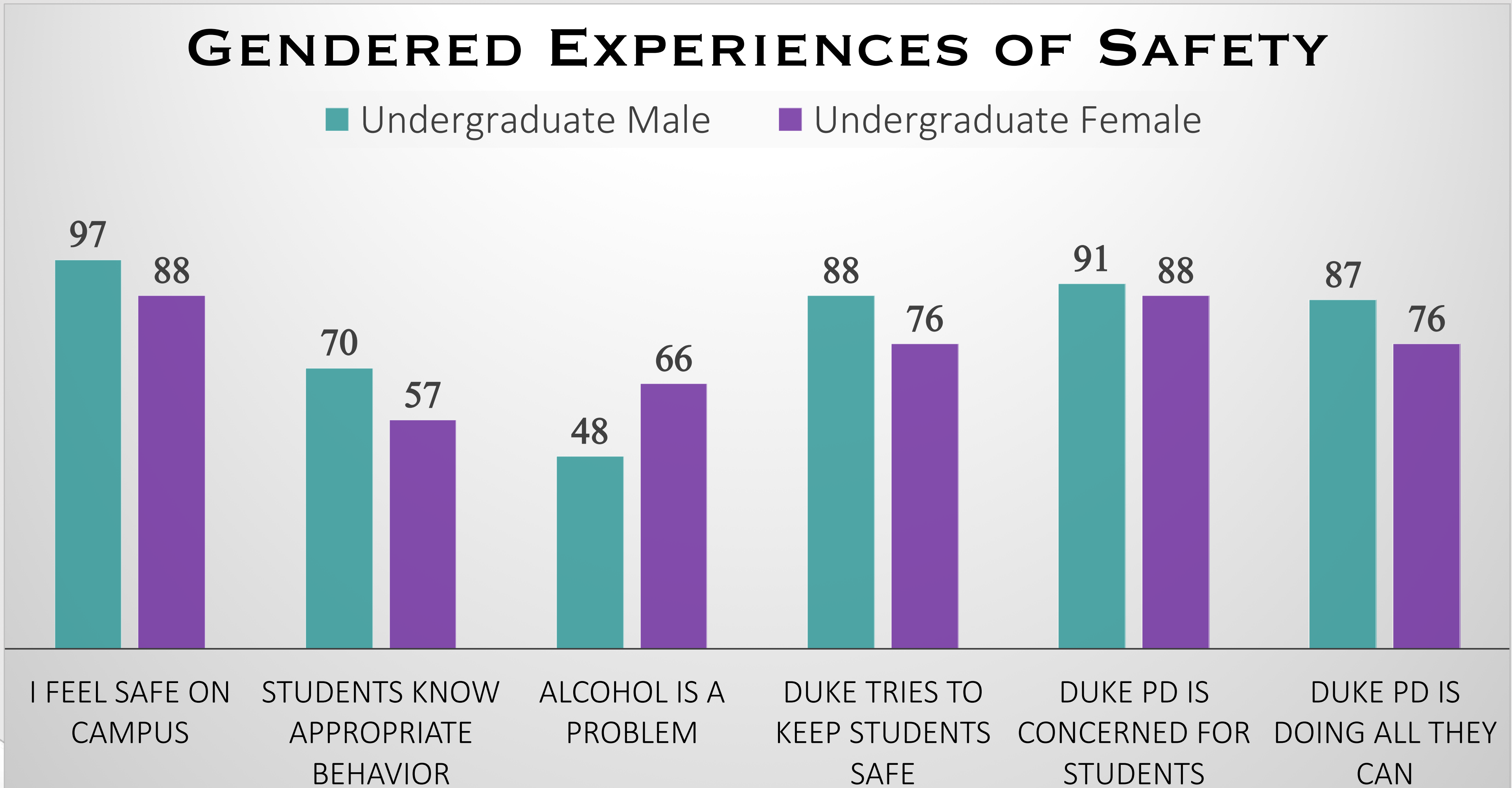


Figure 1. Male and female students perceive safety on campus differently. In general, male students think of campus as a safer place than female students. This includes how safe campus is, as well as how safe Duke is trying to make campus for its students.

COMPARISON TO OTHER INSTITUTIONS

	DUKE UNIVERSITY	POMONA COLLEGE	TULANE UNIVERSITY	VANDERBILT UNIVERSITY
GENDER RESOURCE CENTER	YES	—	YES	YES
SEXUAL MISCONDUCT CENTER	—	YES	YES	YES
POLICY	YES	YES	YES	YES
NORMS-BASED TRAINING	—	YES	—	—
INTERACTIVE BYSTANDER INTERVENTION TRAINING	—	YES	YES	YES

Table 1. Resources offered by Duke compared to other similar universities.

WHAT IS CONSENT?

- Freely Given
- Informed
- Reversible
- Enthusiastic
- Specific

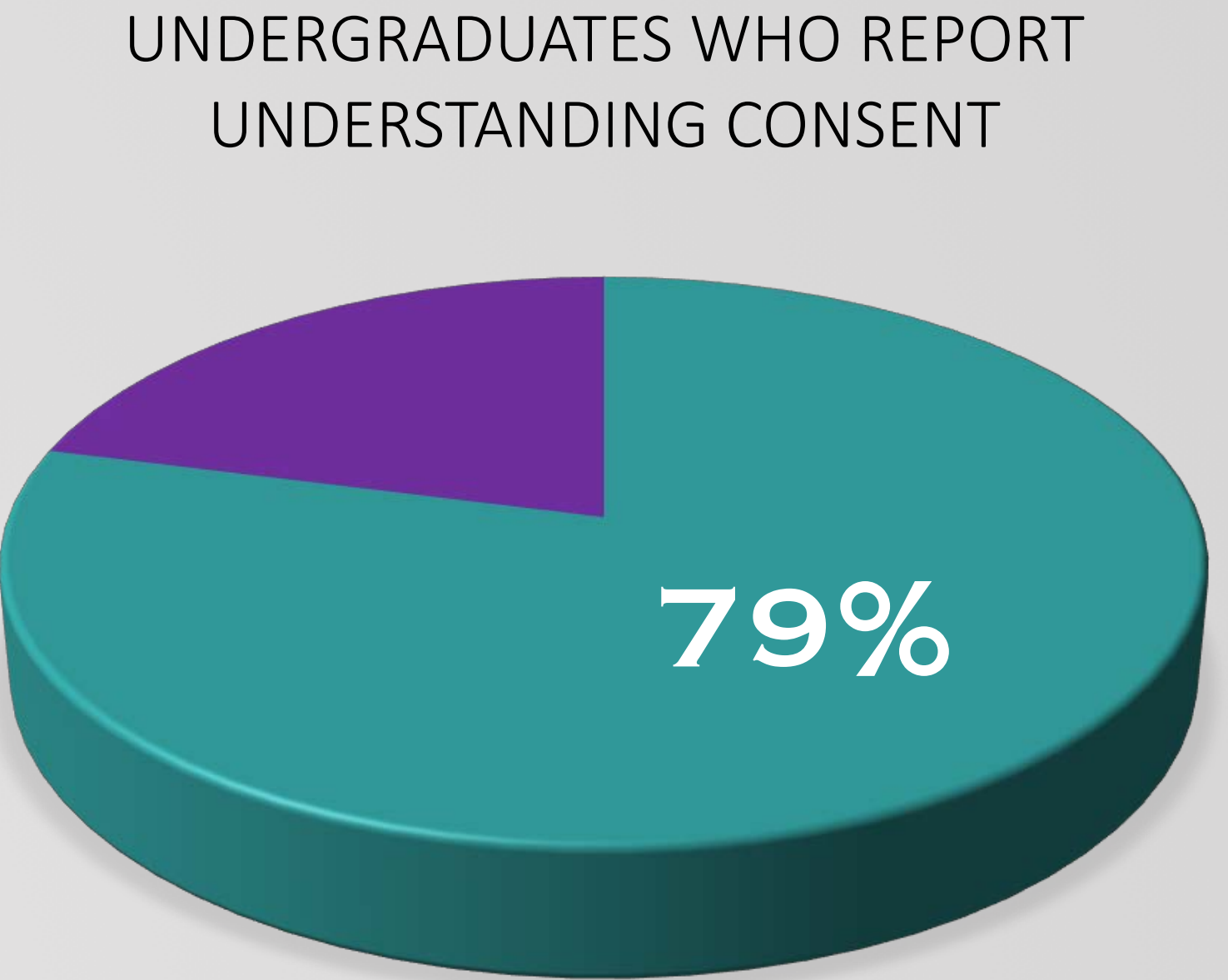
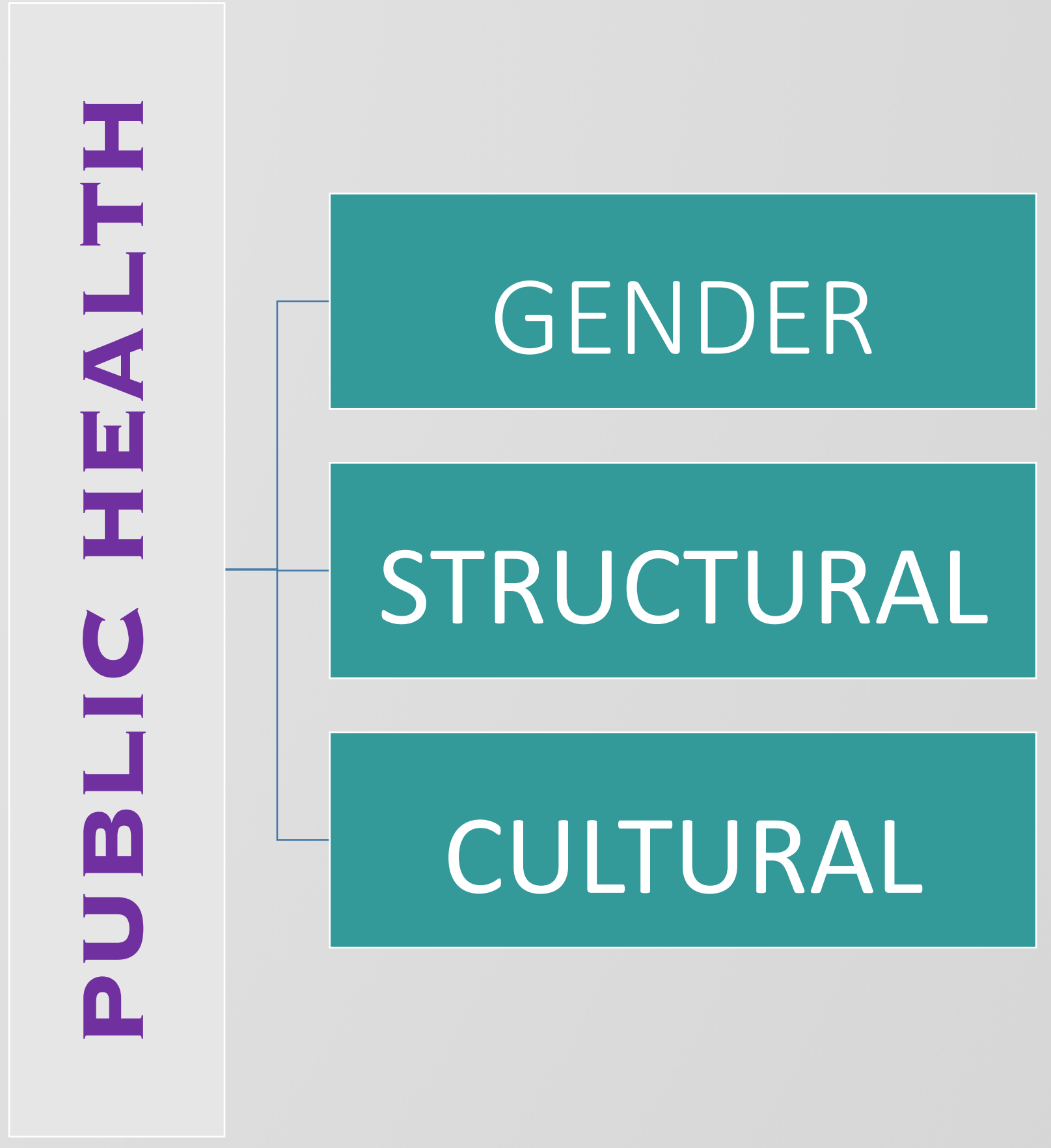


Figure 2. The large majority of male and females report that they understand consent to be an agreement to a specific activity made while all parties are non-coerced and in no altered states. Yet, rates of assault persist. Future research should explore this disparity between knowledge and behavioral rates.

NEXT STEPS



Based on this analysis of different institutions of higher education, we believe that Duke should adopt a Public Health framework, which encompasses gender, structural, and cultural concerns, in its consideration of sexual misconduct on campus.

For more information, see: <https://studentaffairs.duke.edu/conduct/z-policies/student-sexual-misconduct-policy-dukes-commitment-title-ix>
https://studentaffairs.duke.edu/sites/default/files/2017-07/Student_Experience_Survey_1.pdf